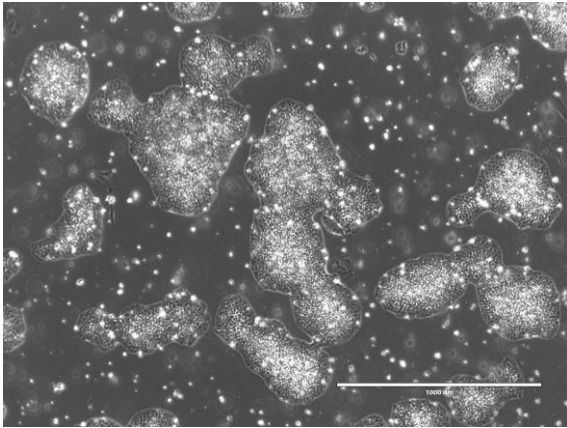
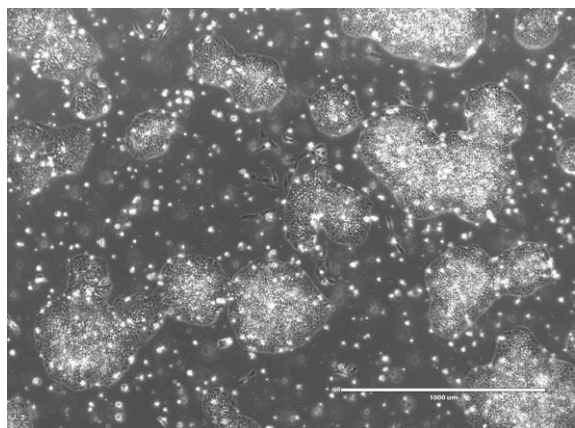


【 CiRA-j-1434 】 Morphology of iPSC colonies

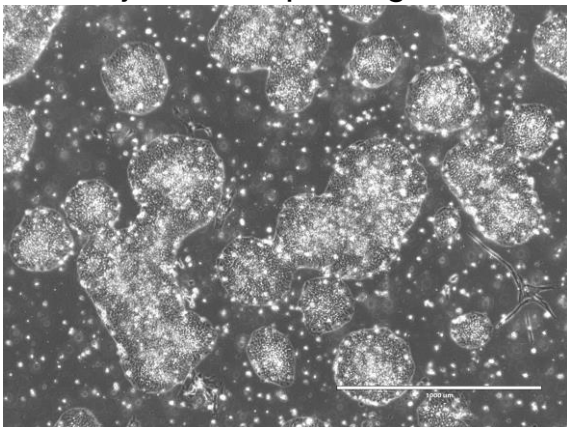
CiRA-j-1434-A: passage-3



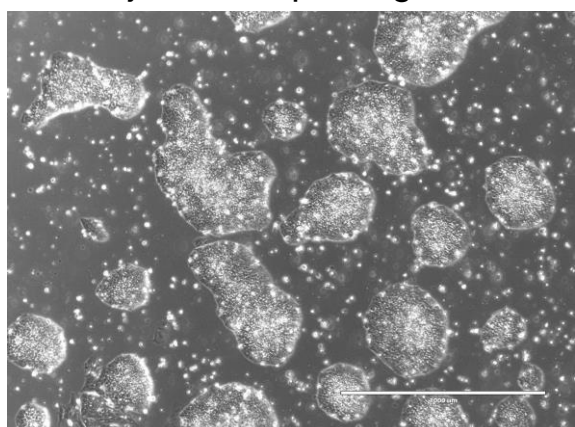
CiRA-j-1434-B: passage-3



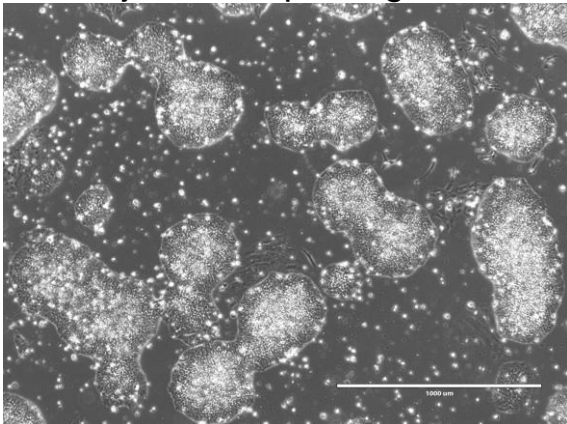
CiRA-j-1434-C: passage-3



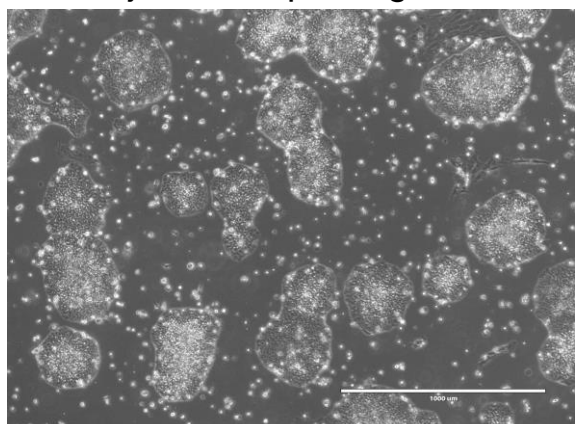
CiRA-j-1434-D: passage-3



CiRA-j-1434-E: passage-3



CiRA-j-1434-F: passage-3



(All images were captured at 4x magnification)